



US Army Corps of Engineers  
BUILDING STRONG®

# Hurricane Ida Advisory #8

For Planning Purposes Only!

WASHINGTON, DC  
08:40:50  
28 Aug 2021

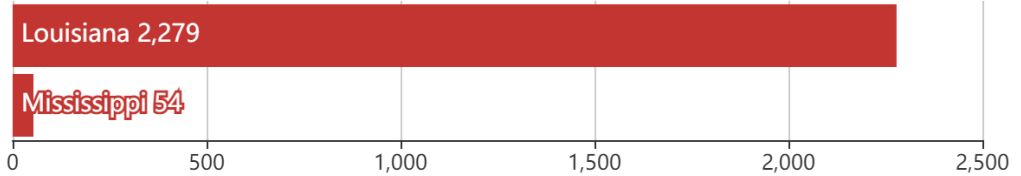
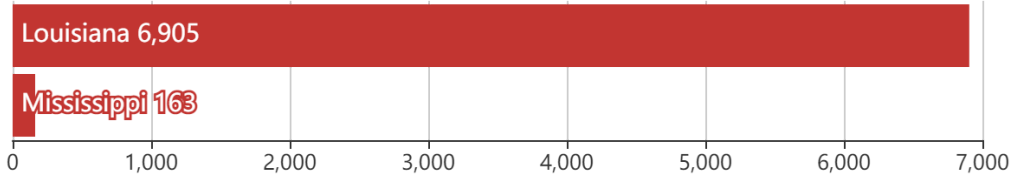
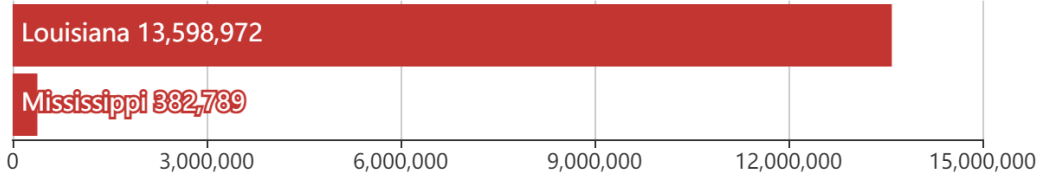
CHICAGO  
07:40:50  
28 Aug 2021

LOS ANGELES  
05:40:50  
28 Aug 2021

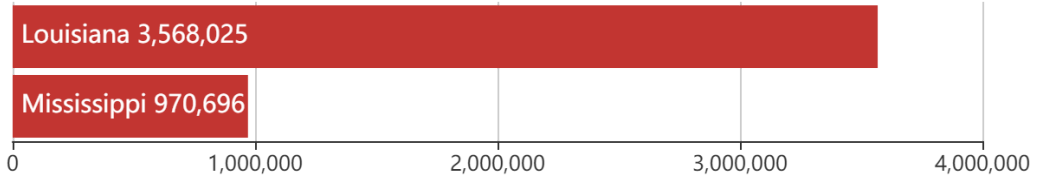
<https://go.usa.gov/xFJRt>

Updated as of 28 Aug 2021 (7:40 AM Central Daylight Time)

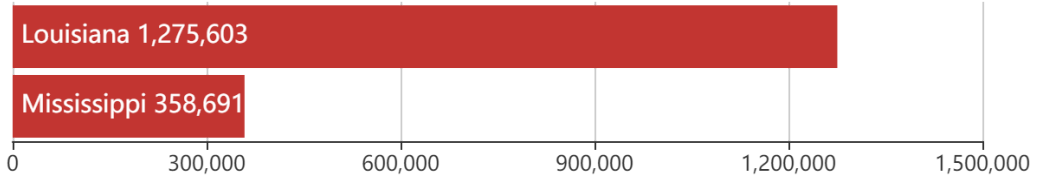
## Debris



## Population



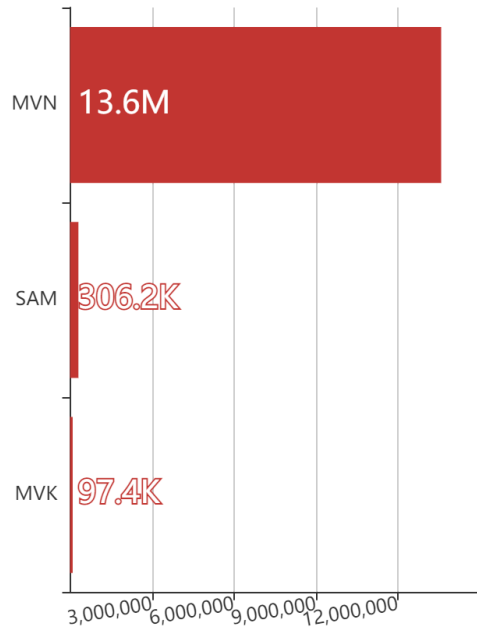
## Households



## Mission Model Summary

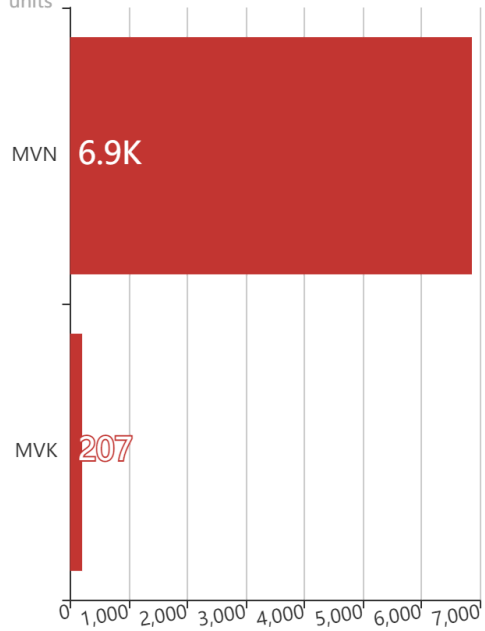
### Debris By USACE District

cu. yd.

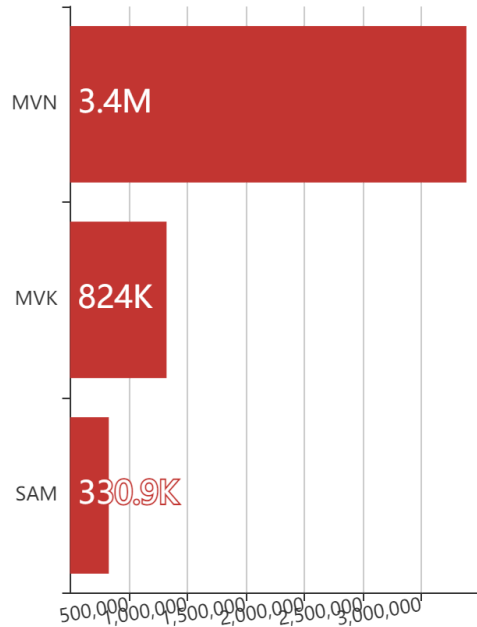


### Est. Temp. Roofing By USACE District

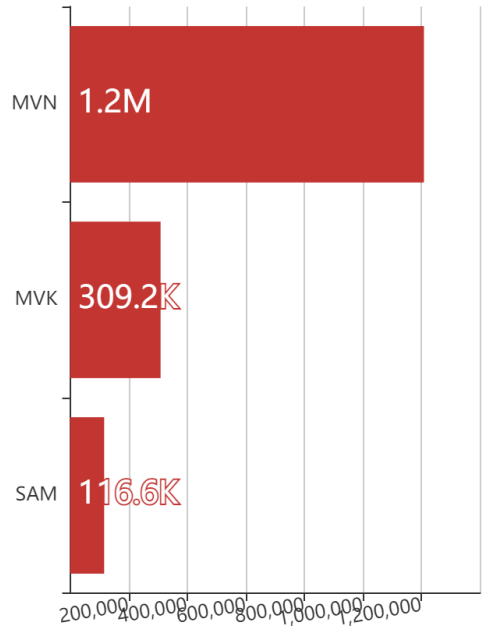
units



### Population By USACE District



### Households By USACE District



## Critical Infrastructure Summary

### Total

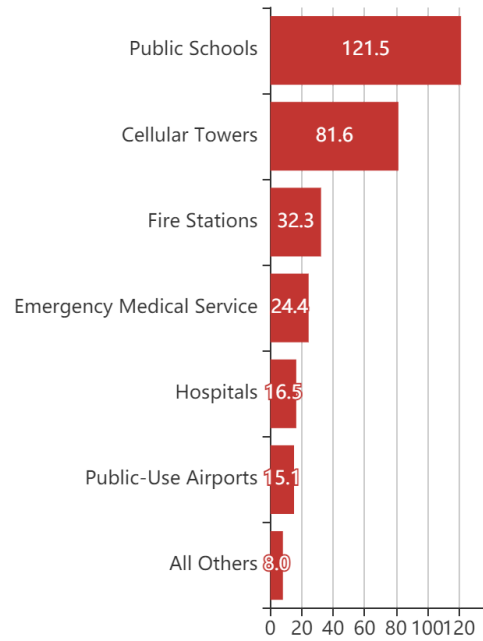


### Power Requirements



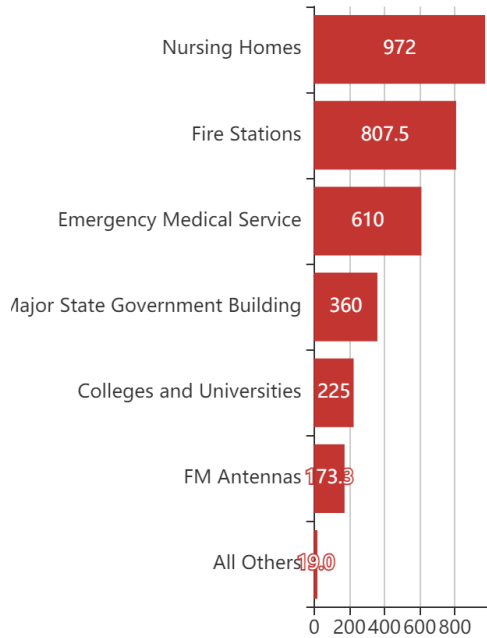
### Generators

By Generator Count



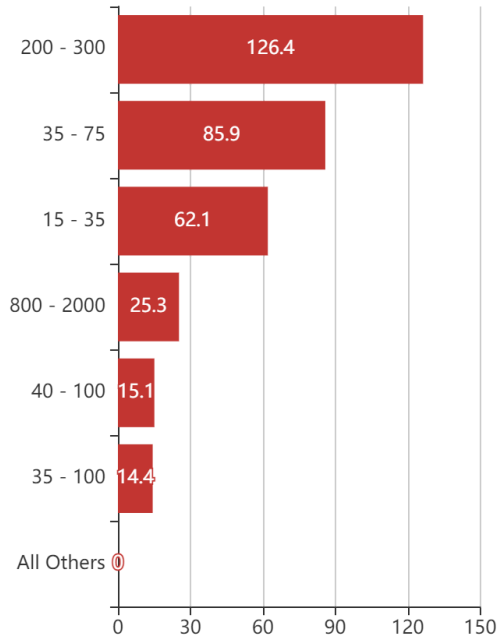
### Generators

By Power Requirement



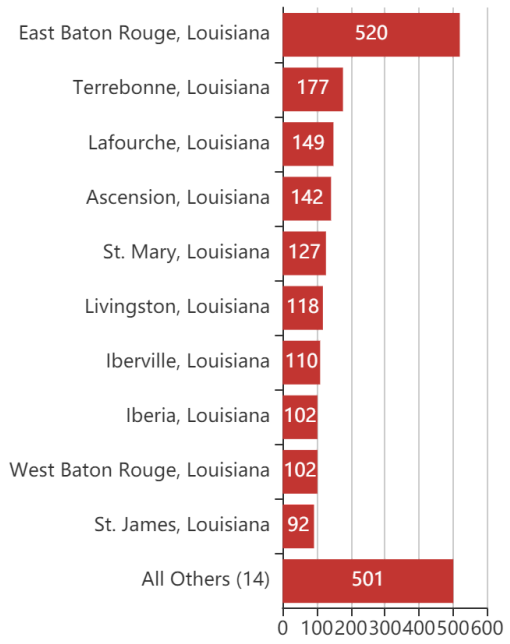
### Generators

By Range



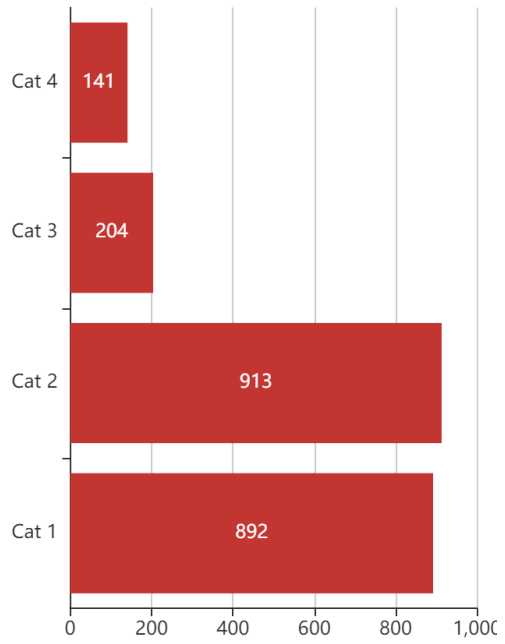
### Structures

By County



### Structures

By Intensity





# Key Messages for Hurricane Ida

## Advisory 8: 4:00 AM CDT Sat Aug 28, 2021



1. Hurricane and tropical storm conditions are ending over Cuba. However, Ida will continue to bring periods of heavy rain across western Cuba through today that may lead to flash flooding and mudslides.

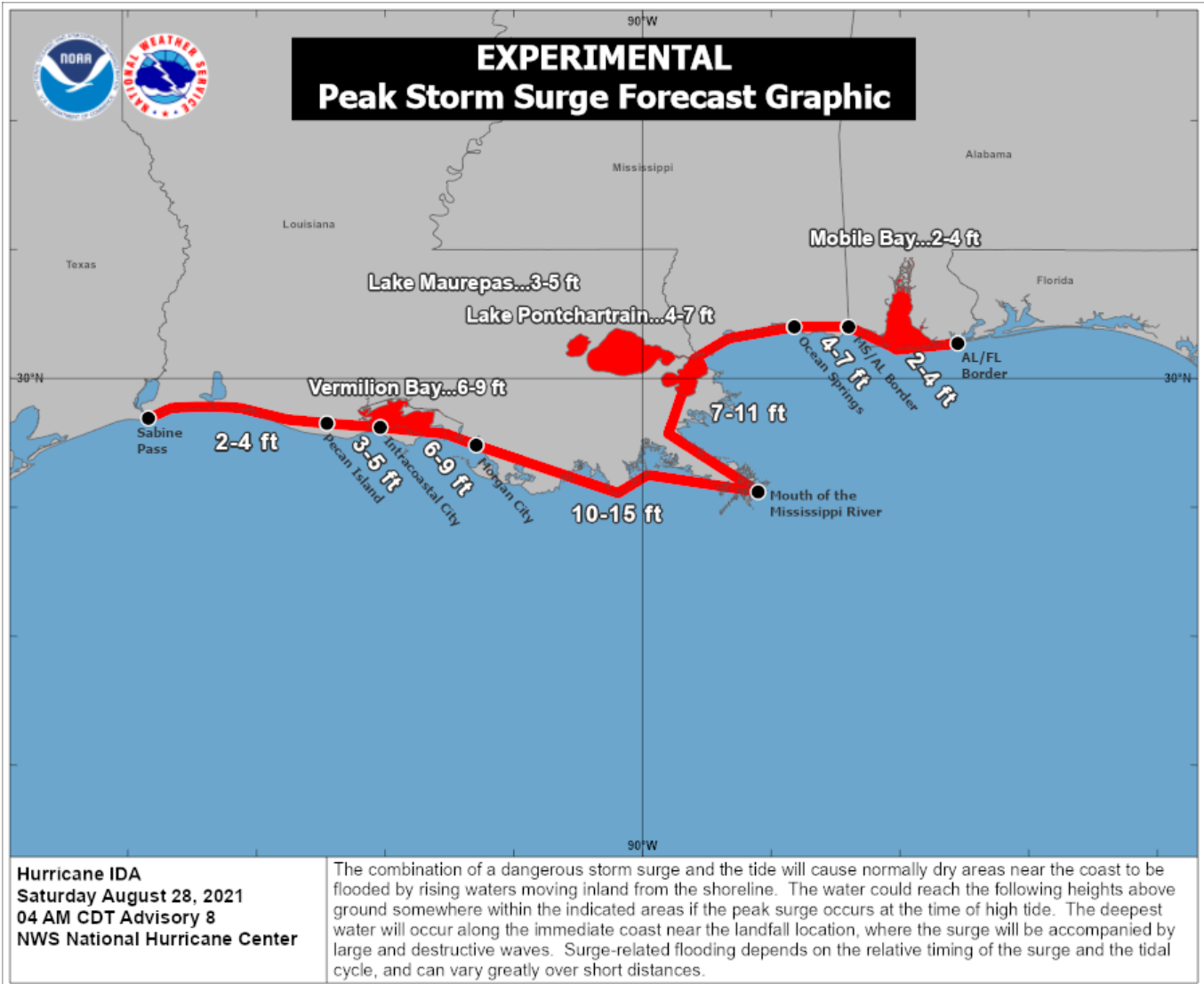
2. There is a danger of life-threatening storm surge inundation Sunday along the coasts of Louisiana and Mississippi within the Storm Surge Warning area. Extremely life-threatening inundation of 10 to 15 feet above ground level is possible within the area from Morgan City, Louisiana, to the Mouth of the Mississippi River. Interests throughout the warning area should follow any advice given by local officials.

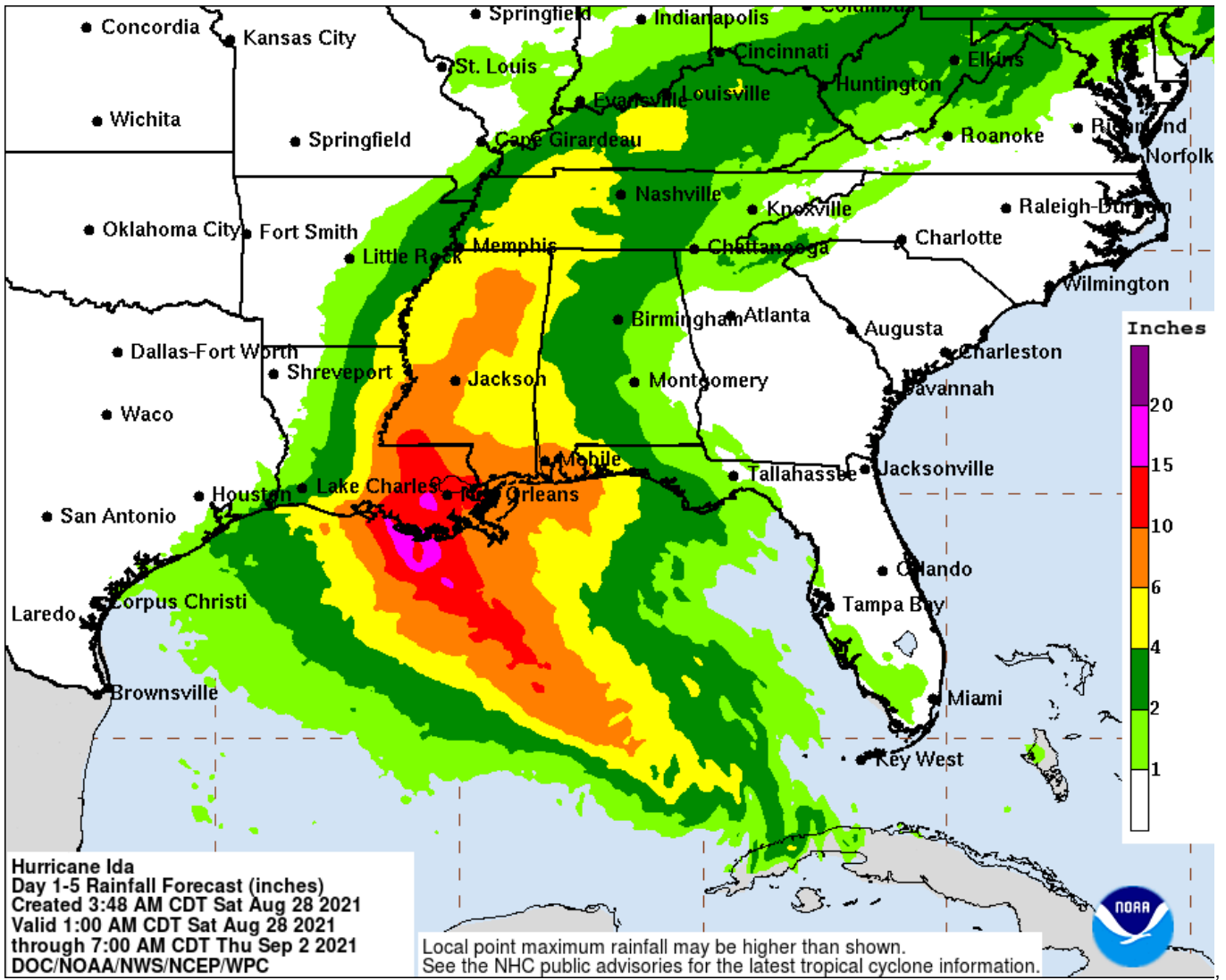
3. Ida is expected to be an extremely dangerous major hurricane when it reaches the coast of Louisiana. Hurricane-force winds are expected Sunday in portions of the Hurricane Warning area along the Louisiana coast, including metropolitan New Orleans, with potentially catastrophic wind damage possible where the core of Ida moves onshore. Actions to protect life and property should be rushed to completion in the warning area.

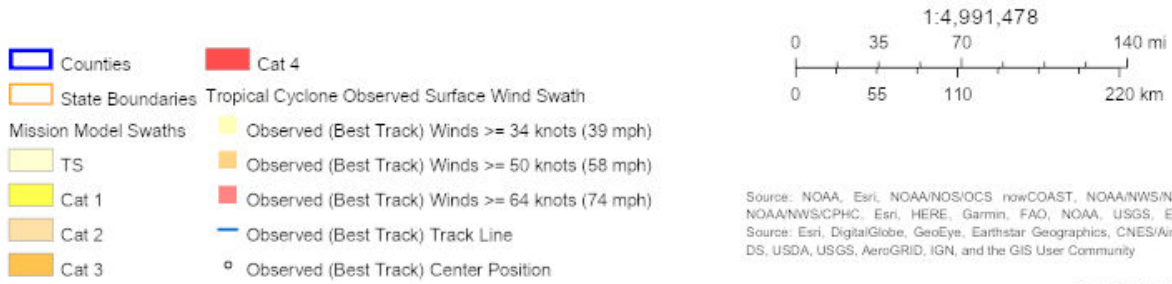
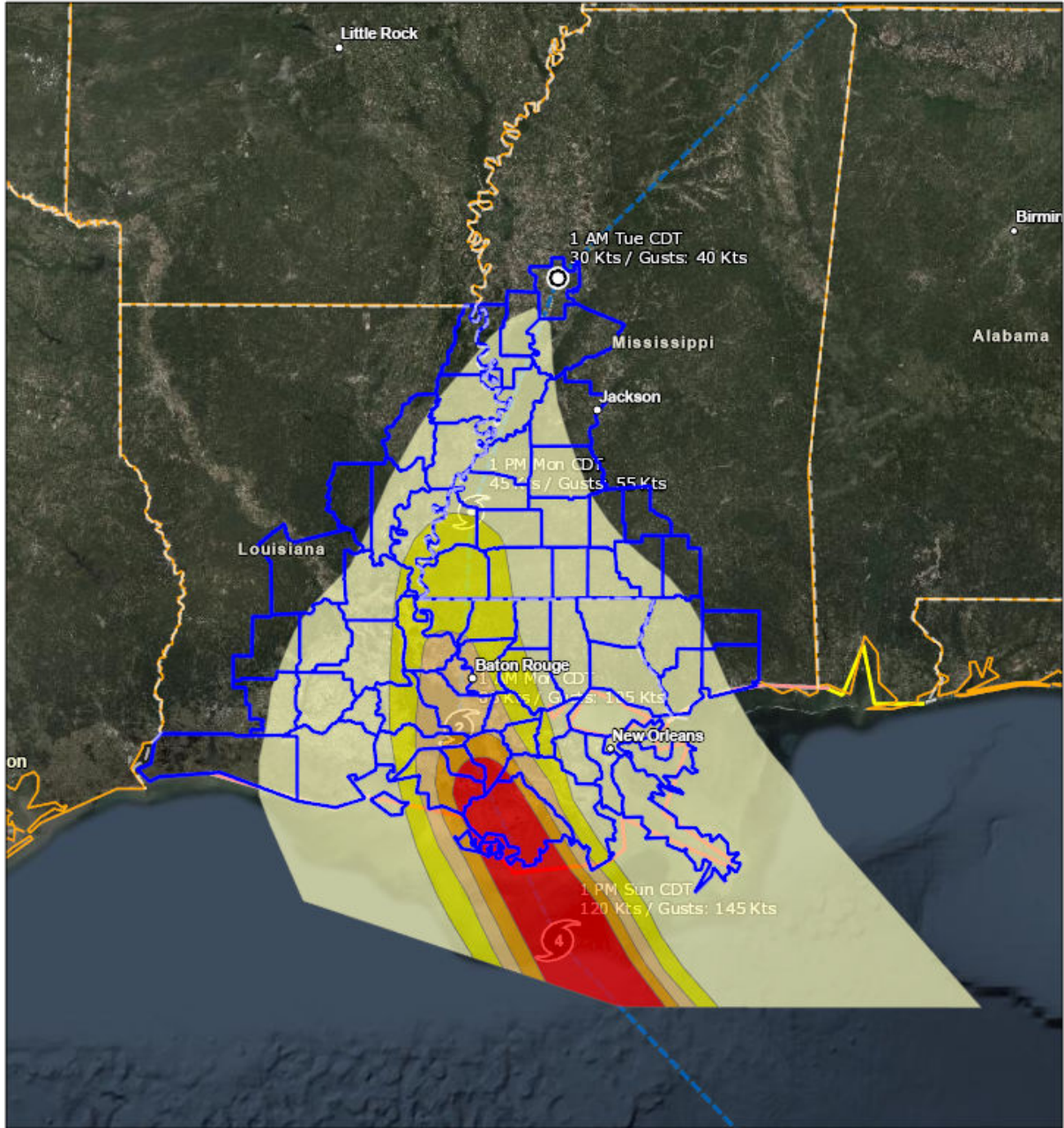
4. Ida is likely to produce heavy rainfall later Sunday into Monday across the central Gulf Coast from southeast Louisiana to coastal Mississippi resulting in significant flash and riverine flooding impacts. As Ida moves inland, flooding impacts are possible across portions of the Lower Mississippi and Tennessee Valleys.



**For more information go to [hurricanes.gov](https://hurricanes.gov)**

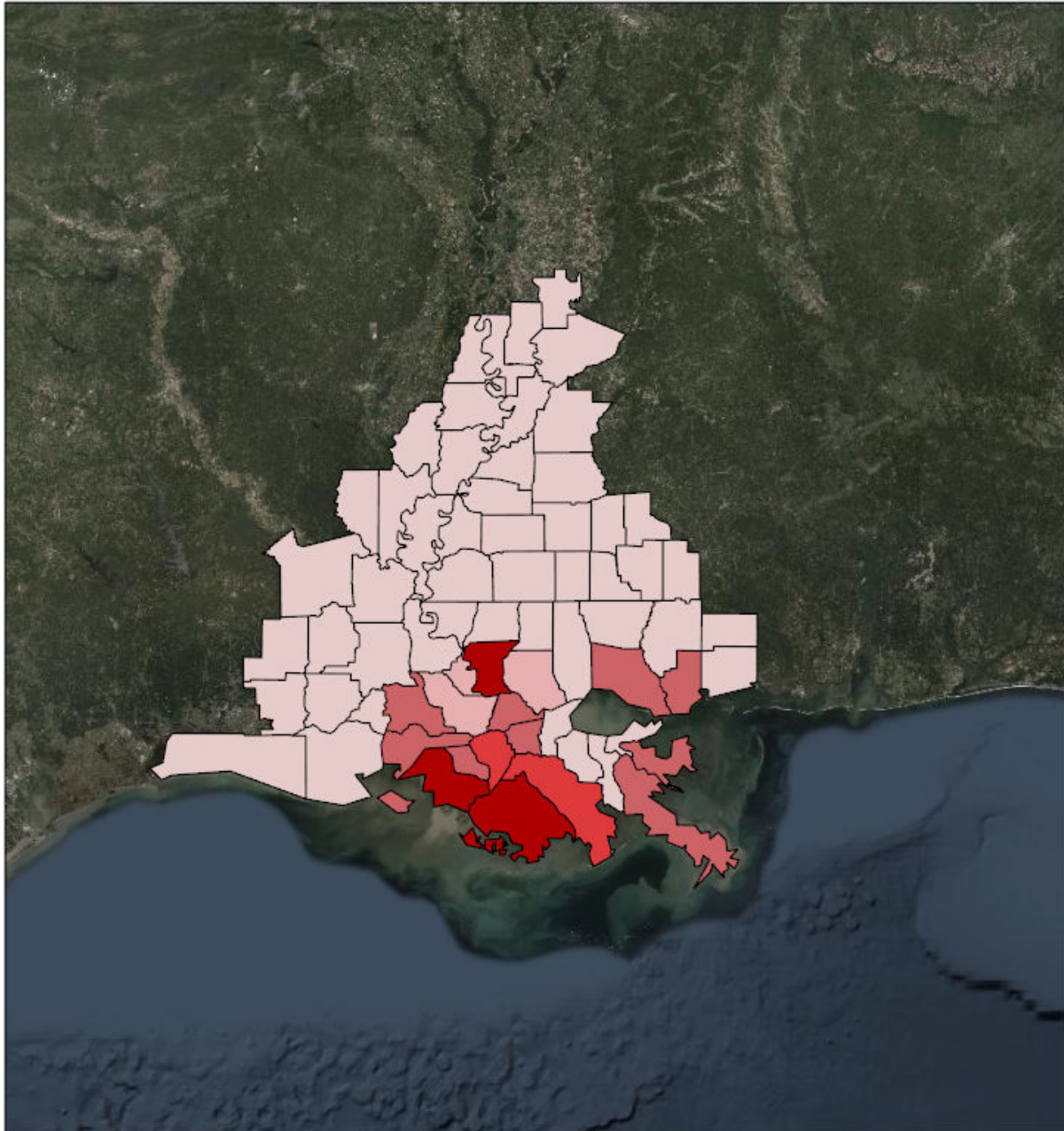










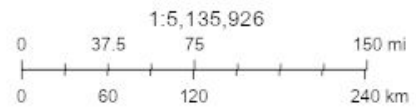


# Debris



## Debris

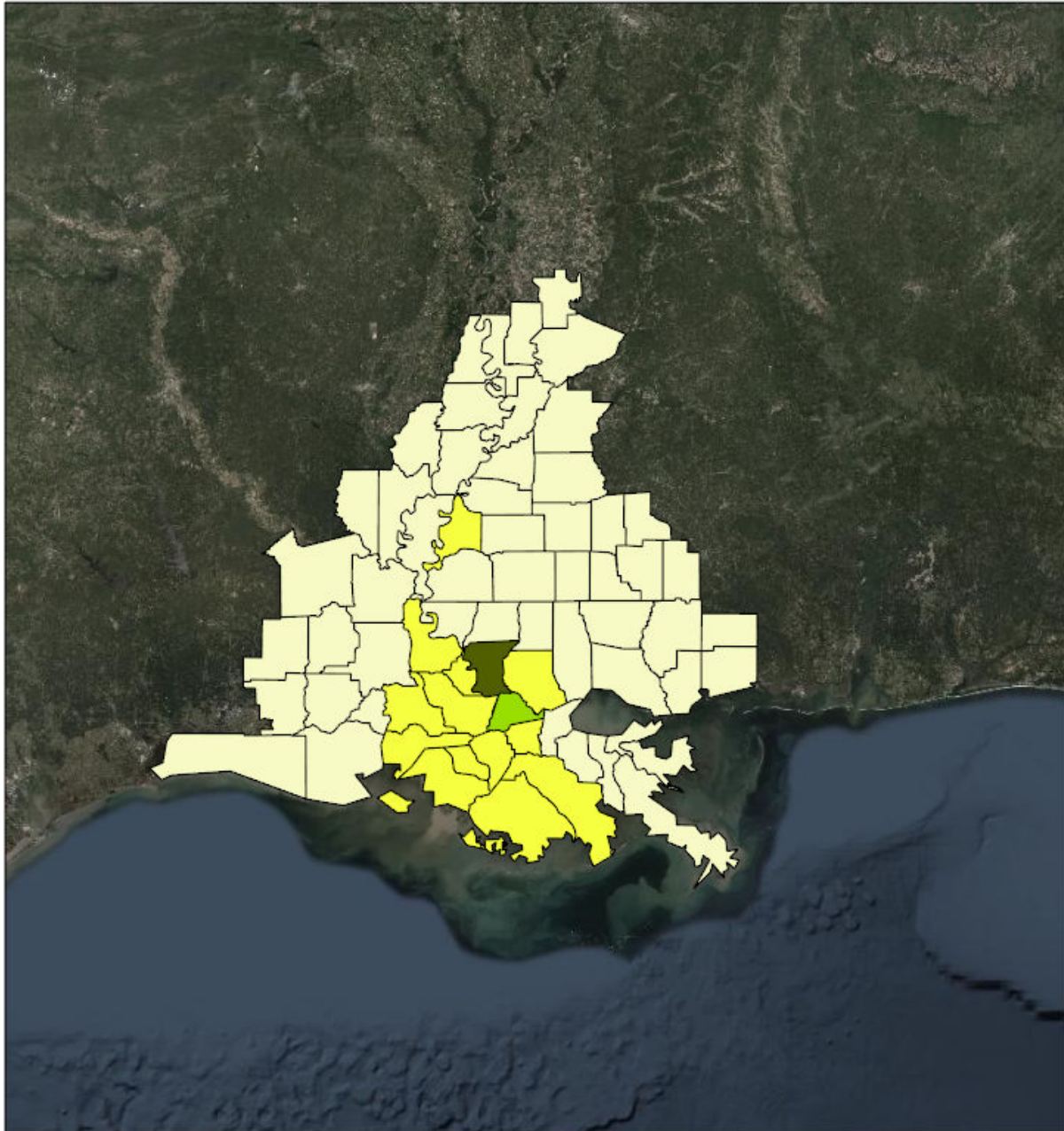
-  < 100,000 cubic yards
-  100,000 - 249,000 cubic yards
-  250,000 - 499,999 cubic yards
-  500,000 - 999,999 cubic yards



Source: Esri, DigitalGlobe, GeoEye, Earthstar Geographics, CNES/Airbus DS, USDA, USGS, AeroGRID, IGN, and the GIS User Community

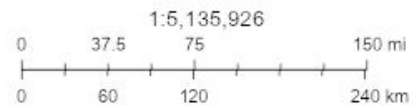
Created by SimSuite

# Est. Temp. Roofing



Est. Temp. Roofing

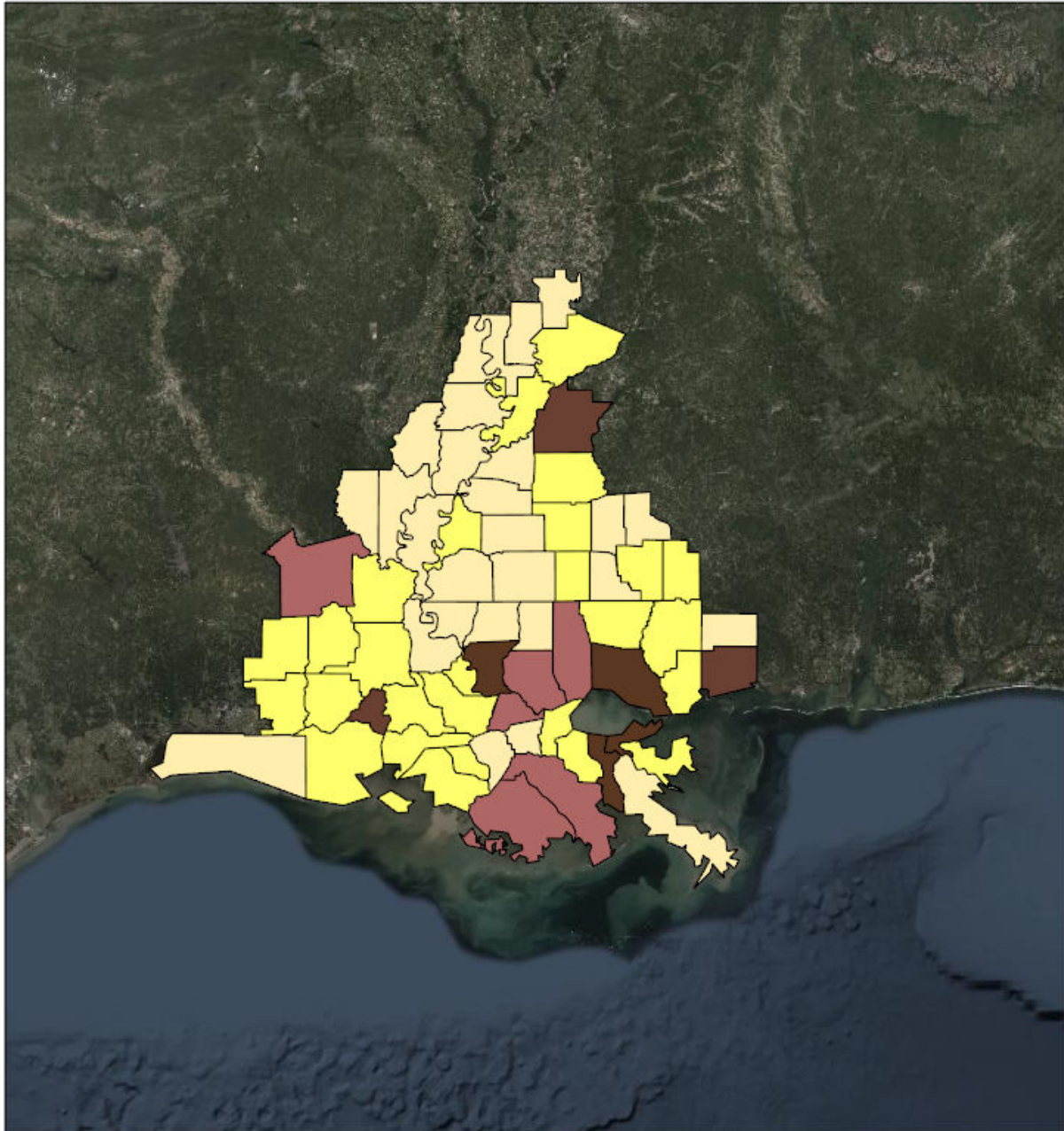
- < 100 units
- 100 - 499 units
- 500 - 999 units





Source: Esri, DigitalGlobe, GeoEye, Earthstar Geographics, CNES/Airbus DS, USDA, USGS, AeroGRID, IGN, and the GIS User Community

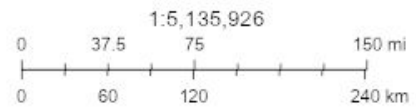
Created by SimSuite

# Population



## Population

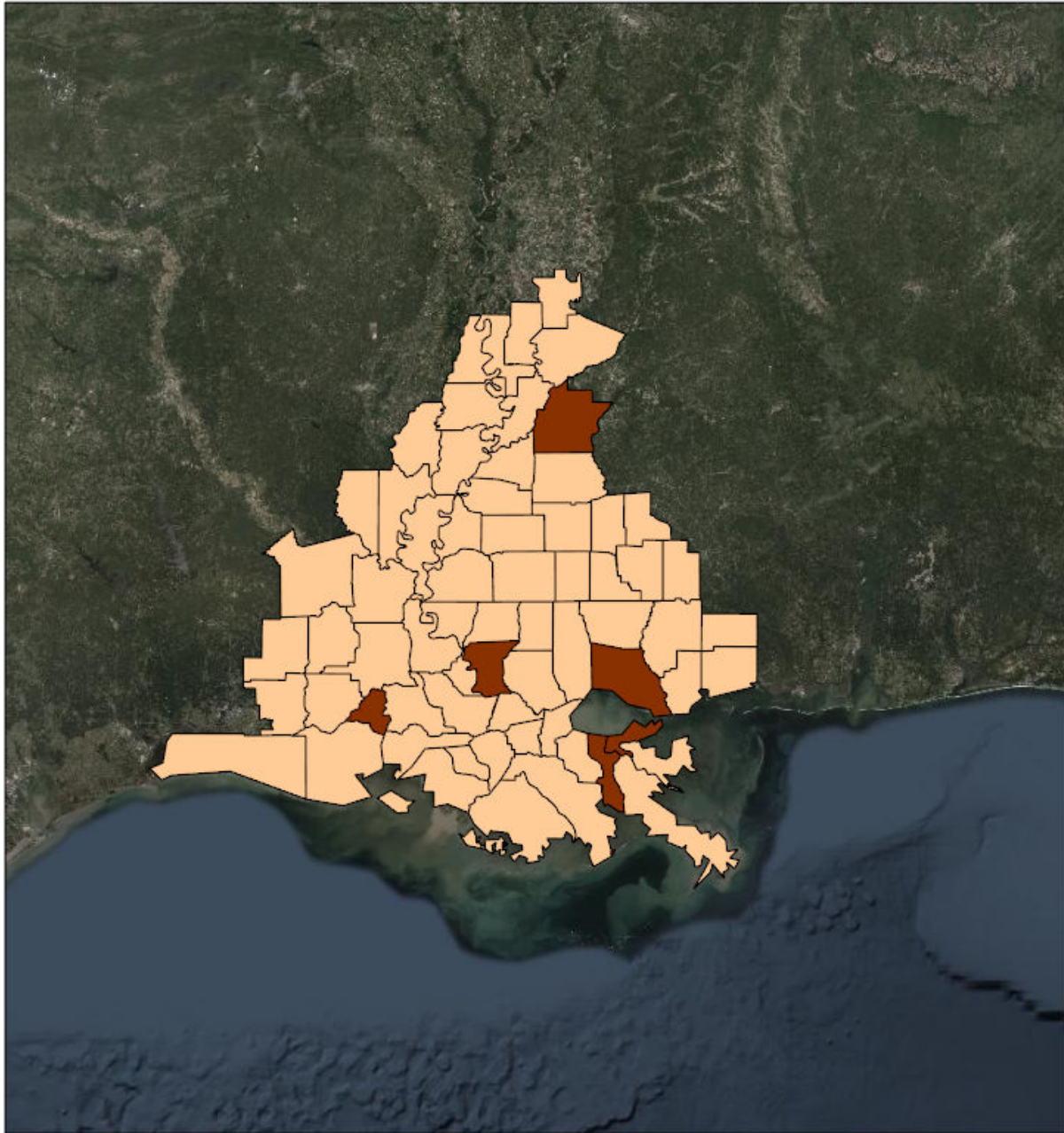
-  < 25,000 persons
-  25,000 - 99,000 persons
-  100,000 - 174,999 persons
-  175,000 - 249,000 persons



Source: Esri, DigitalGlobe, GeoEye, Earthstar Geographics, CNES/Airbus DS, USDA, USGS, AeroGRID, IGN, and the GIS User Community

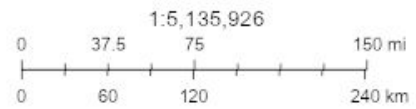
Created by SimSuite

# Households



## Households

- < 7,500 Households
- 15,000 - 24,999 Households
- 25,000 - 49,999 Households



Source: Esri, DigitalGlobe, GeoEye, Earthstar Geographics, CNES/Airbus DS, USDA, USGS, AeroGRID, IGN, and the GIS User Community

Created by SimSuite

## Mission Summary



The mission models account for storm surge and wind damage only, but do not account for other related storm hazards that may affect the mission estimates.

Mission Summary	
Total Counties	66
Debris (cu. yd.)	13,981,761
Est. Temp. Roofing (units)	7,068
Act. Temp. Roofing (units)	2,332
Population	4,538,721
Households	1,634,294

Population Distribution	
Tropical Storm	2,712,053
Category 1	623,863
Category 2	444,751
Category 3	64,824
Category 4	112,604

LOUISIANA	Yds of Debris (13,598,972)	Est. Roof Units (6,905)	Act. Roof Units (2,279)	Population (3,568,025)	Households (1,275,603)
Acadia	0	0	0	64,233	22,841
Allen	0	0	0	27,184	8,516
Ascension	445,179	637	210	124,274	37,790
Assumption	925,242	193	64	24,326	8,736
Avoyelles	7,662	16	5	43,493	15,432
Cameron	0	0	0	7,408	2,575
Catahoula	0	0	0	10,384	3,834
Concordia	13,162	28	9	20,789	7,613
East Baton Rouge	2,103,079	2,973	981	455,183	172,057
East Carroll	0	0	0	7,690	2,552
East Feliciana	37,839	76	25	20,133	7,022
Evangeline	0	0	0	35,225	12,829
Franklin	0	0	0	21,409	7,904
Iberia	297,759	282	93	74,654	26,778
Iberville	219,997	265	88	34,675	11,072
Jefferson	0	0	0	436,044	169,647
Jefferson Davis	0	0	0	33,324	11,771
La Salle	0	0	0	15,517	5,468
Lafayette	0	0	0	249,487	87,027
Lafourche	972,591	416	137	102,036	35,486
Livingston	129,467	275	91	142,761	46,007
Madison	0	0	0	11,737	4,025

Orleans	0	0	0	378,952	142,158
Plaquemines	458,557	0	0	24,106	8,077
Pointe Coupee	96,344	143	47	22,931	9,082
Rapides	0	0	0	138,904	50,401
St. Bernard	362,358	0	0	42,016	13,221
St. Charles	6,465	14	5	55,762	18,557
St. Helena	1,921	4	1	11,008	4,333
St. James	420,745	127	42	22,785	7,717
St. John the Baptist	37,531	80	26	46,127	15,965
St. Landry	32,167	68	23	85,834	31,857
St. Martin	413,810	176	58	55,795	19,216
St. Mary	1,882,284	405	134	54,463	20,457
St. Tammany	342,679	0	0	259,212	87,521
Tangipahoa	0	0	0	133,414	45,135
Tensas	0	0	0	5,076	2,172
Terrebonne	4,198,085	470	155	116,998	40,091
Vermilion	0	0	0	61,784	21,889
Washington	0	0	0	48,152	18,113
West Baton Rouge	170,085	210	69	26,881	8,688
West Feliciana	23,964	46	15	15,859	3,971

<b>MISSISSIPPI</b>	<b>Yds of Debris (382,789)</b>	<b>Est. Roof Units (163)</b>	<b>Act. Roof Units (54)</b>	<b>Population (970,696)</b>	<b>Households (358,691)</b>
Adams	47,594	101	33	31,160	12,643
Amite	8,423	18	6	12,545	5,351
Claiborne	0	0	0	9,331	3,440
Copiah	0	0	0	29,484	10,708
Franklin	3,640	8	3	8,081	3,211
Hancock	306,223	0	0	48,810	17,380
Harrison	0	0	0	205,027	71,476
Hinds	0	0	0	243,165	91,351
Humphreys	0	0	0	8,556	3,373
Issaquena	0	0	0	1,325	472
Jefferson	0	0	0	7,644	2,929
Jefferson Davis	0	0	0	11,776	4,977
Lamar	0	0	0	58,929	21,542
Lawrence	0	0	0	13,333	5,078
Lincoln	0	0	0	35,319	13,296
Marion	0	0	0	26,158	10,135
Pearl River	0	0	0	56,827	20,816
Pike	0	0	0	40,438	15,370
Sharkey	0	0	0	4,786	1,834
Stone	0	0	0	18,163	6,165
Walthall	0	0	0	14,801	5,888
Warren	0	0	0	48,277	18,941
Wilkinson	16,910	36	12	9,239	3,455
Yazoo	0	0	0	27,522	8,860

## Critical Infrastructure

Summary			
Total Critical Facilities		2,150	
Power Requirements (kW)		78,994.7	
Range (kW)			
Communications	# FED Gen Req	Range (kW)	Req kW
AM Antennas (22)	1.1	35 - 75	60.5
Cellular Towers (136)	81.6	35 - 75	4,488.0
FM Antennas (63)	3.2	35 - 75	173.3
Education	# FED Gen Req	Range (kW)	Req kW
Private Schools (105)	0.0	200 - 300	0.0
Public Schools (405)	121.5	200 - 300	30,375.0
Colleges and Universities (45)	0.9	200 - 300	225.0
Emergency Services	# FED Gen Req	Range (kW)	Req kW
911 Call Centers (0)	0.0	15 - 35	0.0
Emergency Medical Service (244)	24.4	15 - 35	610.0
Fire Stations (323)	32.3	15 - 35	807.5
Service Providers (0)	0.0	0 - 0	0.0
Healthcare	# FED Gen Req	Range (kW)	Req kW
Nursing Homes (96)	14.4	35 - 100	972.0
Hospitals (55)	16.5	800 - 2000	23,100.0
Urgent Care Facilities (20)	4.0	200 - 300	1,000.0
Military	# FED Gen Req	Range (kW)	Req kW
Air National Guard (ANG) Sites (0)	0.0	15 - 35	0.0
Army National Guard (ARNG) Sites (17)	0.0	15 - 35	0.0
National Security Government Military Facilities (97)	0.0	15 - 35	0.0
Law Enforcement	# FED Gen Req	Range (kW)	Req kW
Prison Points (32)	6.4	400 - 600	3,200.0
Local Police (50)	5.0	15 - 35	125.0
State Police (4)	0.2	15 - 35	5.0
Correctional Facilities (0)	0.0	400 - 600	0.0
State and Local EOC	# FED Gen Req	Range (kW)	Req kW
Local Emergency Operations Centers (20)	4.0	15 - 40	110.0
State Emergency Operation Centers (EOCs) (1)	0.2	15 - 35	5.0



<b>State Facilities</b>	<b># FED Gen Req</b>	<b>Range (kW)</b>	<b>Req kW</b>
Governors Mansion (1)	0.0	100 - 200	0.0
Major State Government Building (24)	2.4	100 - 200	360.0

<b>Transportation</b>	<b># FED Gen Req</b>	<b>Range (kW)</b>	<b>Req kW</b>
Ports (194)	0.0	600 - 1200	0.0
Amtrak Stations (3)	0.0	100 - 300	0.0
Bus Stations (32)	0.0	100 - 300	0.0
Intermodal Terminal Facilities (11)	0.0	100 - 300	0.0
Railroad Stations (2)	0.0	100 - 300	0.0
Public-Use Airports (126)	15.1	40 - 100	1,058.4

<b>Water</b>	<b># FED Gen Req</b>	<b>Range (kW)</b>	<b>Req kW</b>
Water Treatment Facilities (0)	0.0	800 - 2000	0.0
Wastewater Treatment Plants (22)	8.8	800 - 2000	12,320.0

## COVID-19

#	County	Cases
1	Jefferson	65,340
2	East Baton Rouge	58,416
3	Orleans	43,361
4	St. Tammany	39,777
5	Lafayette	34,858
6	Harrison	28,793
7	Hinds	28,436
8	Livingston	22,291
9	Tangipahoa	20,978
10	Ascension	19,952
11	Rapides	18,539
12	Terrebonne	17,784
13	Lafourche	16,391
14	St. Landry	12,418
15	Iberia	11,197
16	Acadia	9,346
17	Lamar	9,311
18	Vermilion	8,883
19	St. Charles	8,289
20	St. Mary	7,782
21	St. Martin	7,617
22	Pearl River	7,521
23	Washington	7,069
24	St. Bernard	6,351
25	Hancock	6,311
26	Avoyelles	6,247
27	Warren	5,870
28	St. John the Baptist	5,816
29	Iberville	5,446
30	Evangeline	5,044
31	Pike	4,797
32	Lincoln	4,731
33	East Feliciana	4,250
34	Allen	4,145
35	Jefferson Davis	4,134
36	West Baton Rouge	4,130
37	Adams	3,947
38	Yazoo	3,883
39	Copiah	3,831

40	Franklin	3,714
41	Marion	3,646
42	Plaquemines	3,558
43	Pointe Coupee	3,522
44	Assumption	3,336
45	Stone	3,135
46	St. James	3,041
47	Concordia	2,792
48	LaSalle	2,329
49	Madison	1,903
50	Lawrence	1,852
51	Walthall	1,826
52	Amite	1,716
53	Catahoula	1,567
54	Jefferson Davis	1,511
55	West Feliciana	1,409
56	East Carroll	1,399
57	St. Helena	1,226
58	Claiborne	1,192
59	Humphreys	1,127
60	Franklin	1,029
61	Wilkinson	925
62	Jefferson	819
63	Cameron	782
64	Sharkey	573
65	Tensas	434
66	Issaquena	184